

# Daystar-M

Indoor Lighting - Spot Lighting



Colour Options



## TECHNICAL INFORMATION

<b>Housing</b>	Aluminum Injection
<b>Frame</b>	Aluminum Injection
<b>Reflector</b>	Metallized Surface Optics
<b>Paint</b>	Electrostatic Powder Paint

## OPTICAL SPECIFICATIONS

<b>Optics</b>	Symmetrical
<b>Light Output Angle</b>	38°
<b>UGR Value</b>	UGR ≤ 18
<b>CRI</b>	CRI ≥ 80
<b>Color Bin Value</b>	Mc Adams ≤ 3

## ELECTRICAL

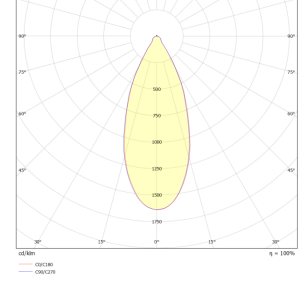
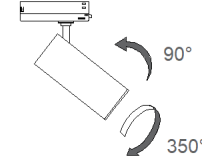
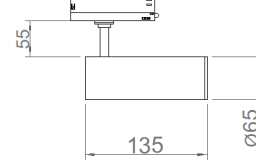
<b>Power (W)</b>	9-18W
<b>Power Factor</b>	>0.95
<b>Light Source</b>	COB LED
<b>Cablling</b>	Halojen-Free
<b>Input Voltage</b>	220-240V AC / 50-60 Hz
<b>LED Driver</b>	High Efficiency Constant Current Output
<b>Ambient Temperature</b>	-20°C / +50°C
<b>LED Lifetime L80B50</b>	>50.000 Hour

## OPTIONAL

DALI  
Tunable White  
CRI > 90  
2700K ~ 6500K  
Different color options

## ASSEMBLY

**Installation Type** Ray Socket



Order Code	W	Lm	Productivity	CCT	CRI	ØxH (mm)	Kg
05638.60.30.008	9	970	105 Lm/W	3000	Ra>80	Ø65x135	0.54

