

Daystar-M

Indoor Lighting - Spot Lighting



Colour Options



TECHNICAL INFORMATION

Housing	Aluminum Injection
Frame	Aluminum Injection
Reflector	Metallized Surface Optics
Paint	Electrostatic Powder Paint

OPTICAL SPECIFICATIONS

Optics	Symmetrical
Light Output Angle	38°
UGR Value	UGR ≤ 18
CRI	CRI ≥ 80
Color Bin Value	Mc Adams ≤ 3

ELECTRICAL

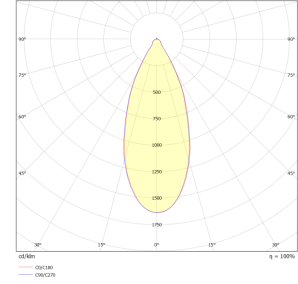
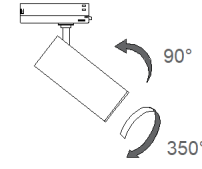
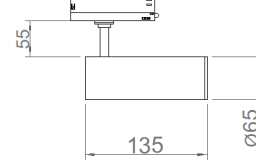
Power (W)	9-18W
Power Factor	>0.95
Light Source	COB LED
Cabbling	Halojen-Free
Input Voltage	220-240V AC / 50-60 Hz
LED Driver	High Efficiency Constant Current Output
Ambient Temperature	-20°C / +50°C
LED Lifetime L80B50	>50.000 Hour

OPTIONAL

DALI
Tunable White
CRI > 90
2700K ~ 6500K
Different color options

ASSEMBLY

Installation Type Ray Socket



Order Code	W	Lm	Productivity	CCT	CRI	ØxH (mm)	Kg
05638.60.30.008	9	970	105 Lm/W	3000	Ra>80	Ø65x135	0.54
05638.60.40.009	9	1040	110 Lm/W	4000	Ra>80	Ø65x135	0.54
05638.60.30.014	18	1890	105 Lm/W	3000	Ra>80	Ø65x135	0.54
05638.60.40.015	18	1990	110 Lm/W	4000	Ra>80	Ø65x135	0.54

